

# STRENGTHENING THE REGIONAL ENGAGEMENT ROLE OF UNIVERSITIES IN AFRICA AND ASIA (SRERUAA)

Regional Profile

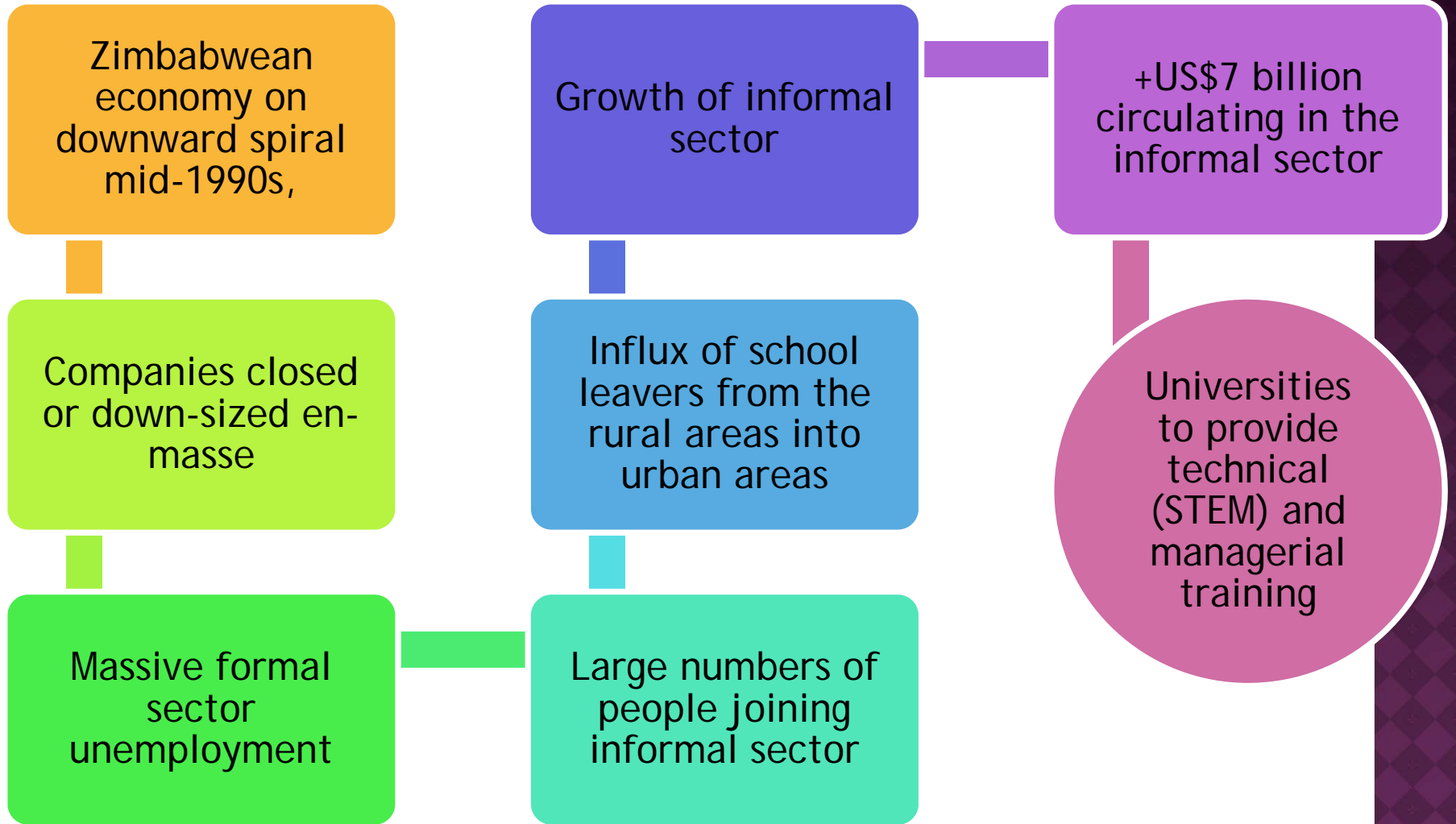


# ZIMBABWE

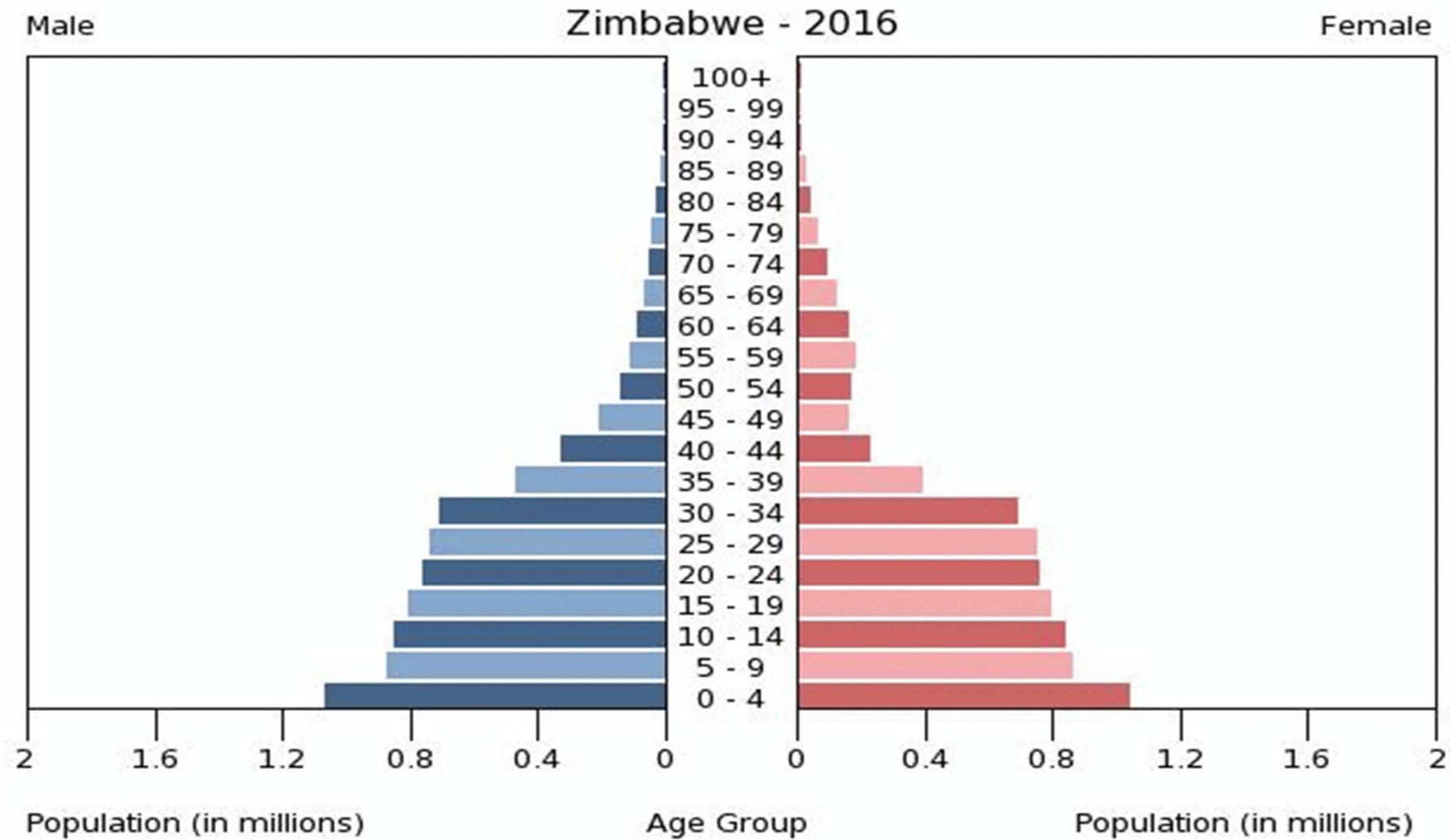
# 1. REGIONAL PORTRAIT

- a) Key issues of interest and relevance to the SREURAA
- b) Approximate population and key features
- c) Essential geographical/environmental features that affect HEIs
- d) Economy, industries and employment features

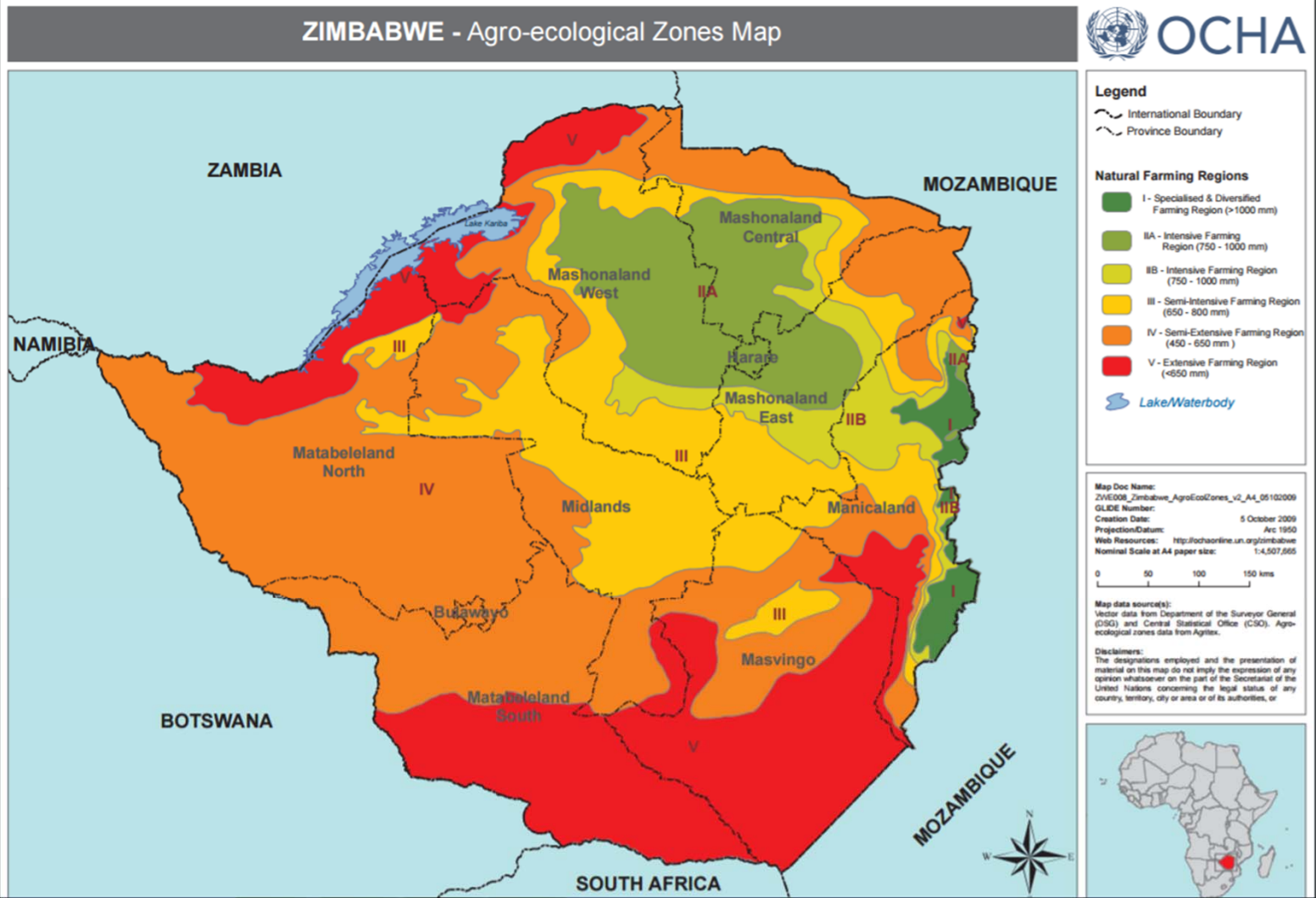
# (A) KEY ISSUES OF INTEREST AND RELEVANCE TO THE SREURAA



## (B) APPROXIMATE POPULATION AND ANY KEY FEATURES



# (C) ESSENTIAL GEOGRAPHICAL/ENVIRONMENTAL FEATURES THAT AFFECT HEI



## (D) ECONOMY, INDUSTRIES AND EMPLOYMENT FEATURES

MINING



INFORMAL  
TRADING  
AND  
INDUSTRY

AGRICULTURE

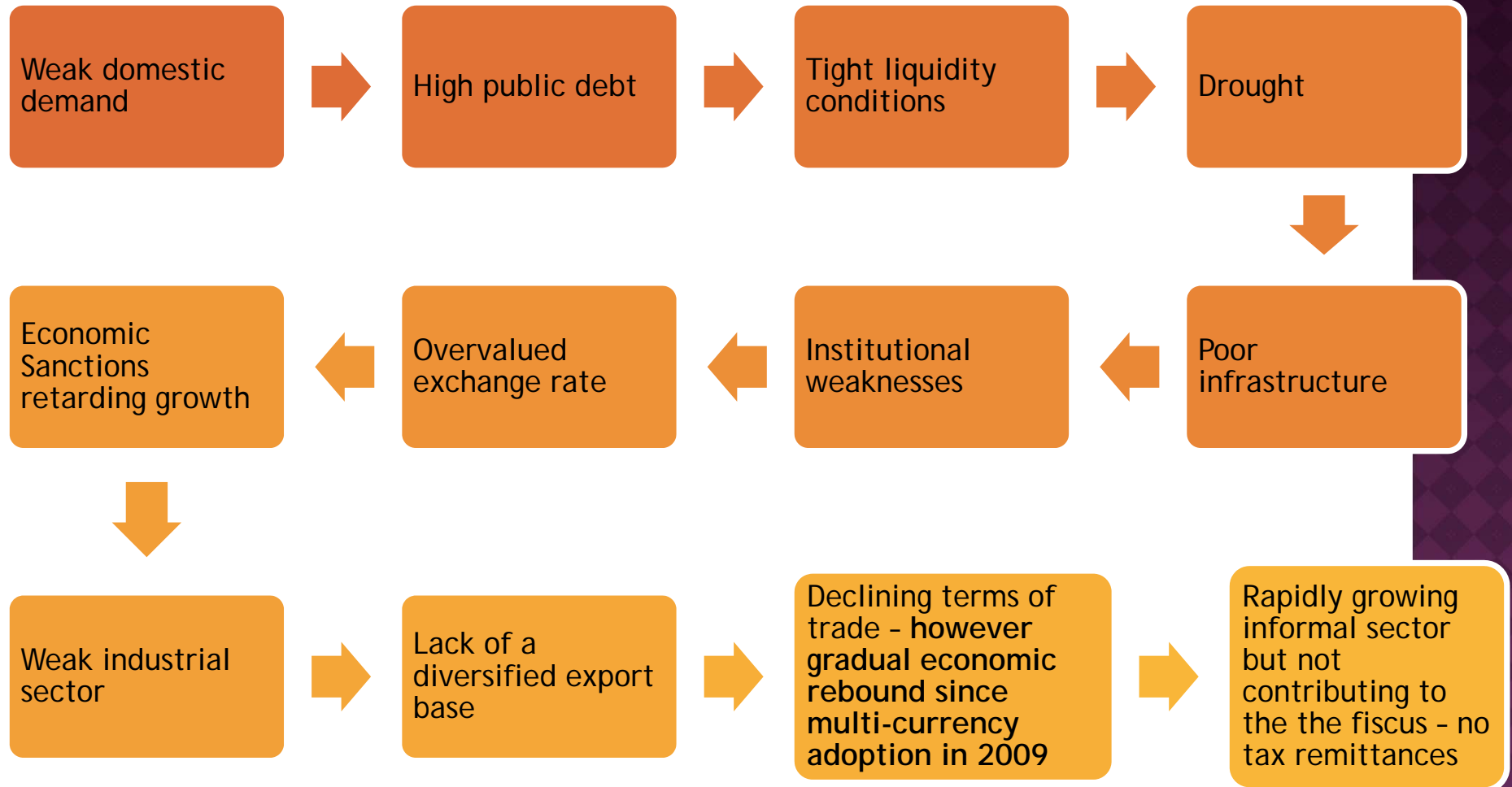


TOURISM

## 2. KEY ISSUES & CHALLENGES CONFRONTING REGION

- a) Economic issues
- b) Social issues including health/welfare/education
- c) Environmental issues (including food/water security)
- d) Cultural issues
- e) Other issues or dimensions

## a) ECONOMIC ISSUES





## (C) ENVIRONMENTAL ISSUES (INCLUDING FOOD/WATER SECURITY

Poor provision  
of social  
services

2016, HDI was  
0.516 placing  
the country at  
154 out of 193

High rural  
urban  
migration

Young  
population,  
with age group  
15-24  
comprising 20%  
while 77% of  
population of  
over 13.4  
million is 35  
years old and  
below

Growing  
unemployment  
and increasing  
poverty =  
restive young  
population

## (D) CULTURAL ISSUES

Harare: a metropolitan and multicultural City;

Not easy to develop strategies that embrace different cultures of residents

Diversity of Languages:

Official language English; predominant indigenous languages are Shona and Ndebele

14 other indigenous languages that are recognised officially across the country

## (E) OTHER ISSUES OR DIMENSIONS

Strong political differences between political parties fuelled by harsh economic environment

Period leading to and just after 2018 General Elections likely to raise tension in communities - not ideal for engagement

Informal traders involved in the informal sector have 'invaded' spaces in the City - presenting challenge to proper human resource audits, development and planning

Rise in corruption, thefts, and other criminal activities

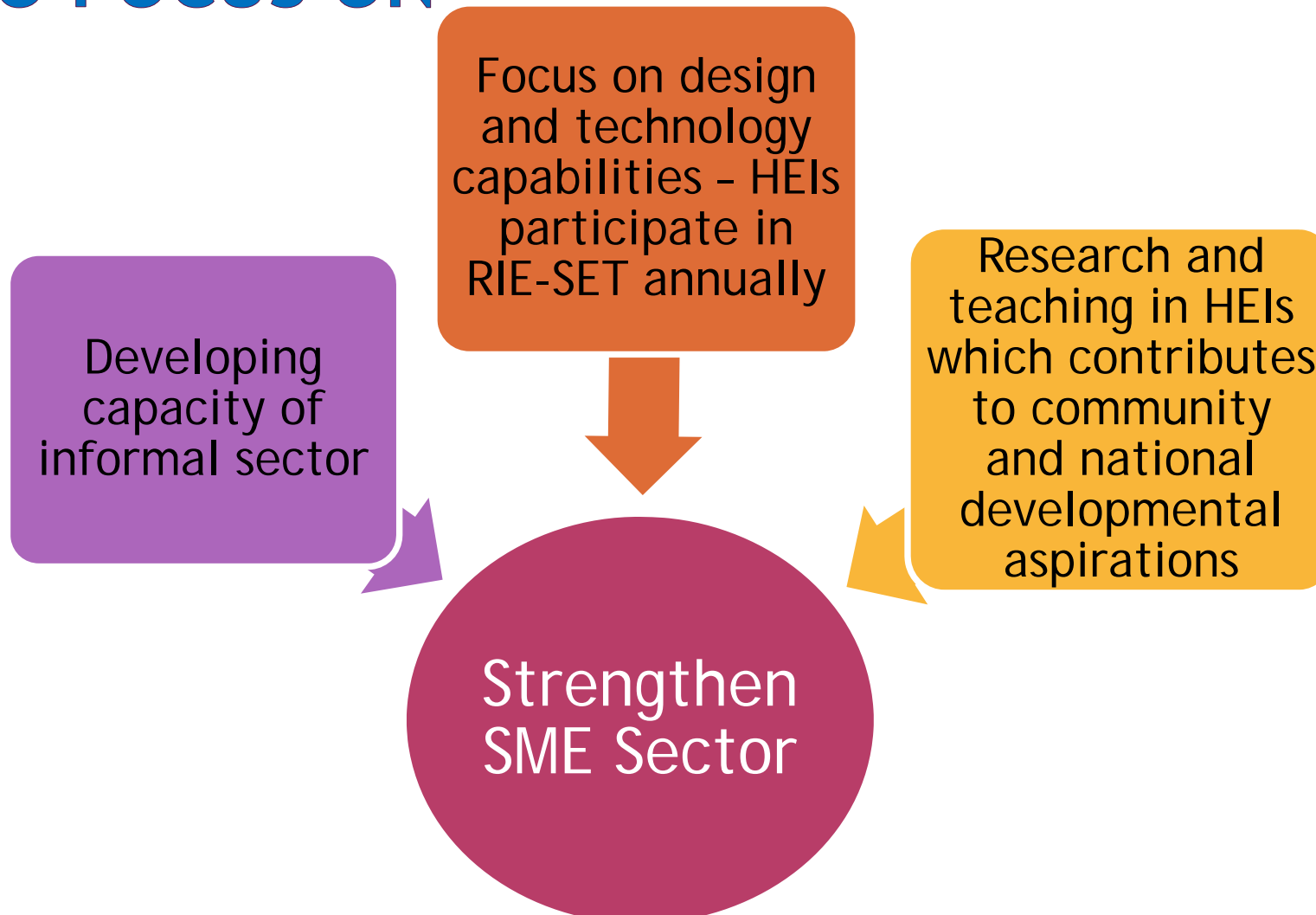
### 3. UNIVERSITIES & OTHER HEI PORTRAIT

1. University of Zimbabwe	Harare
2. National University of Science and Technology	Bulawayo
3. Midlands State University	Gweru
4. Zimbabwe Open University	Harare
5. Chinhoyi University of Technology	Chinhoyi
6. Bindura University of Science Education	Bindura
7. Harare Institute of Technology	Harare
8. Lupane State University	Lupane
9. Great Zimbabwe University	Masvingo
10. Manicaland University of Science and Technology	Mutare
11. Marondera University of Applied Sciences	Marondera
12. Gwanda State University	Gwanda
13. Africa University	Mutare
14. Catholic University in Zimbabwe	Harare
15. Solusi University	Solusi
16. Zimbabwe Ezekiel Guti University	Bindura
17. Reformed Church University	Masvingo
18. Southern Africa Methodist University	Marondera
19. Women's University in Africa	Harare

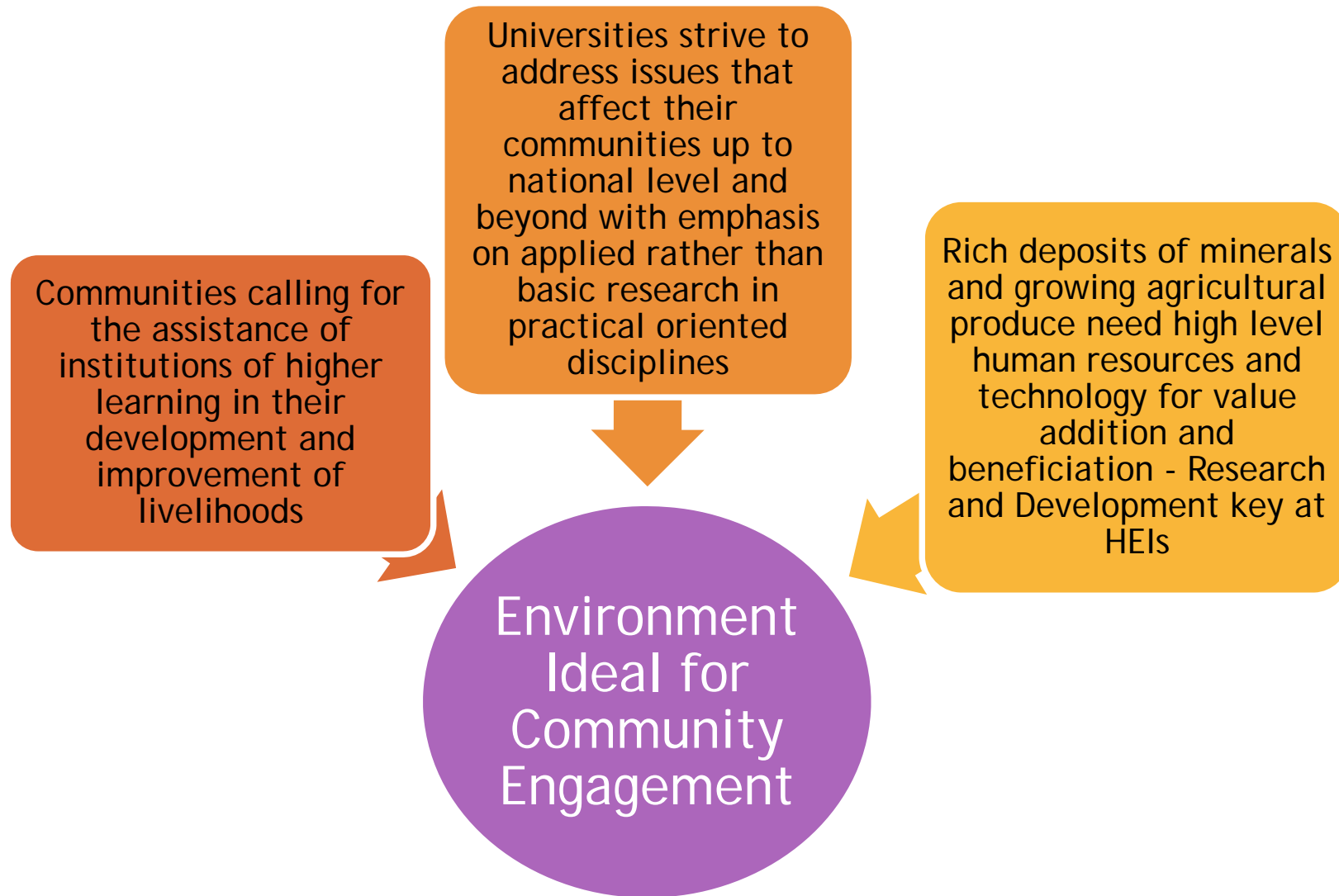
## 4. REGIONAL ASPIRATIONS AND AGENDA

- a) Aspects of regional development and the role of higher education we wish to engage with, focus on and improve on
- b) Situation Analysis
- c) Areas of special interest to concentrate on in collaboration with other regions
- d) Engagement roadmap and strategy

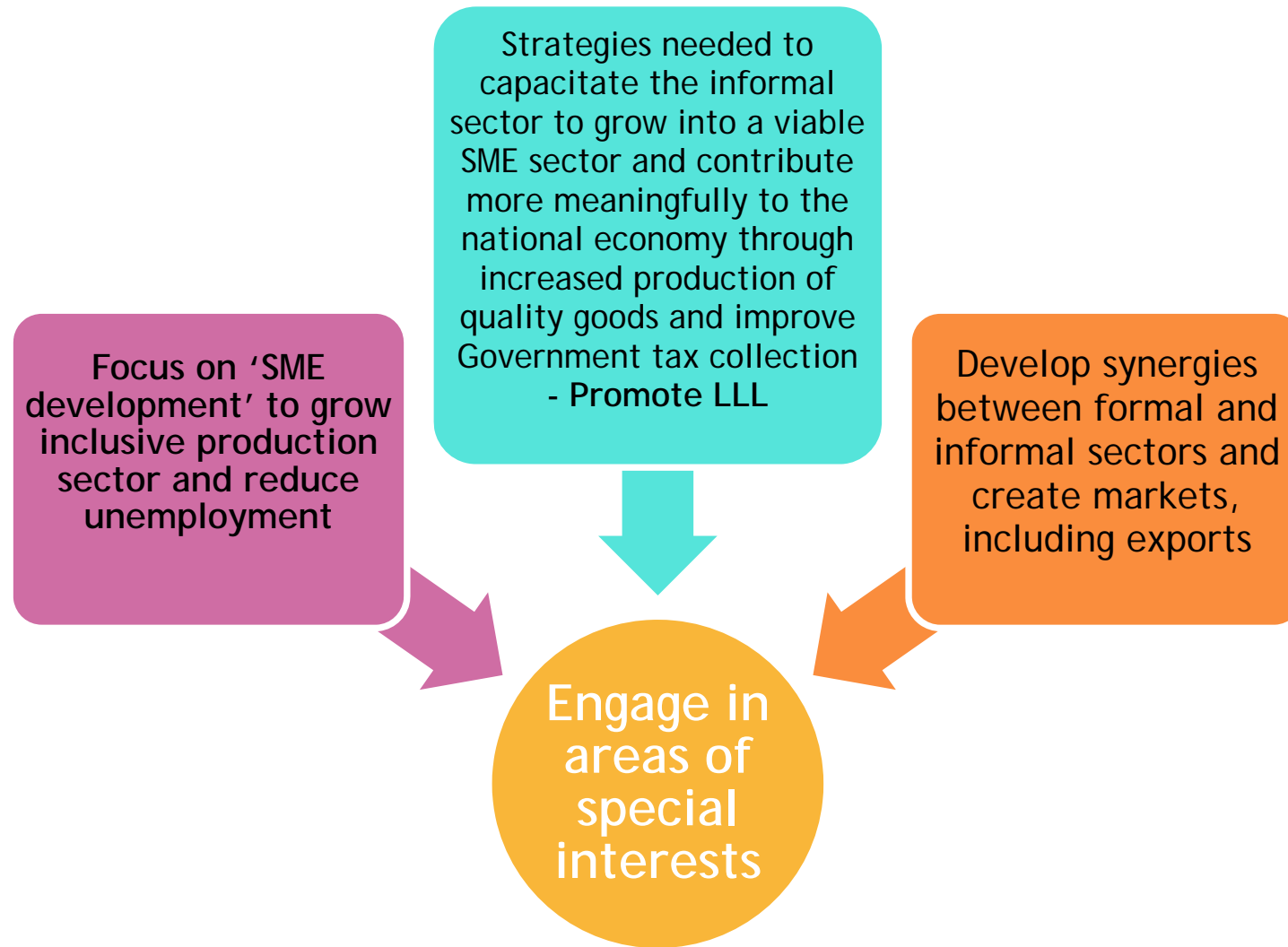
# (A) ASPECTS OF REGIONAL DEVELOPMENT TO FOCUS ON



## (B) SITUATION ANALYSIS



## (C) AREAS OF SPECIAL INTEREST TO COLLABORATE WITH OTHER REGIONS





## (D) ENGAGEMENT ROADMAP AND STRATEGY

