

PASCAL EcCoWell Network Webinar

Transformation through Empathy Partnerships

Empathy, Imagination and Wellbeing



Agenda

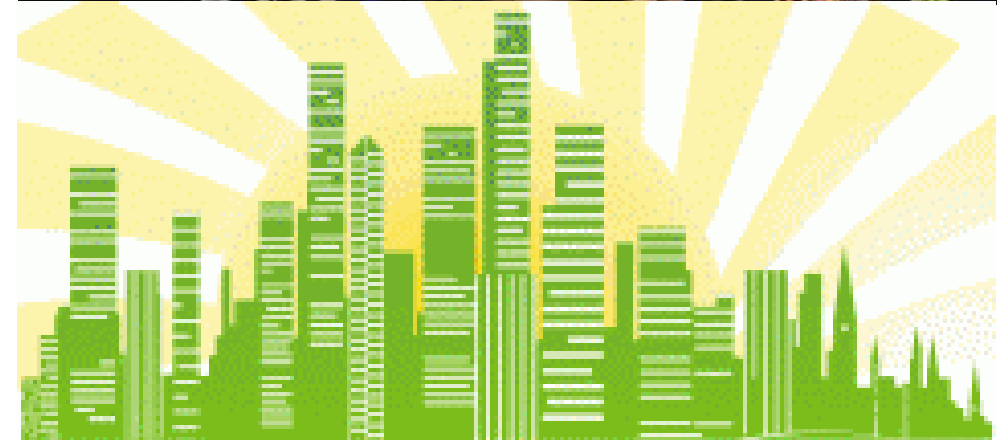
- **Context:** Overview of EcCoWell Partnership Model and Community Recovery Programme
- **Action:** Dynamic and Transformative Partnership Models Interviews and Q&A
- **Sustainability:** Power of Empathy Partnerships For Transformation

**PASCAL Learning Cities
Networks**

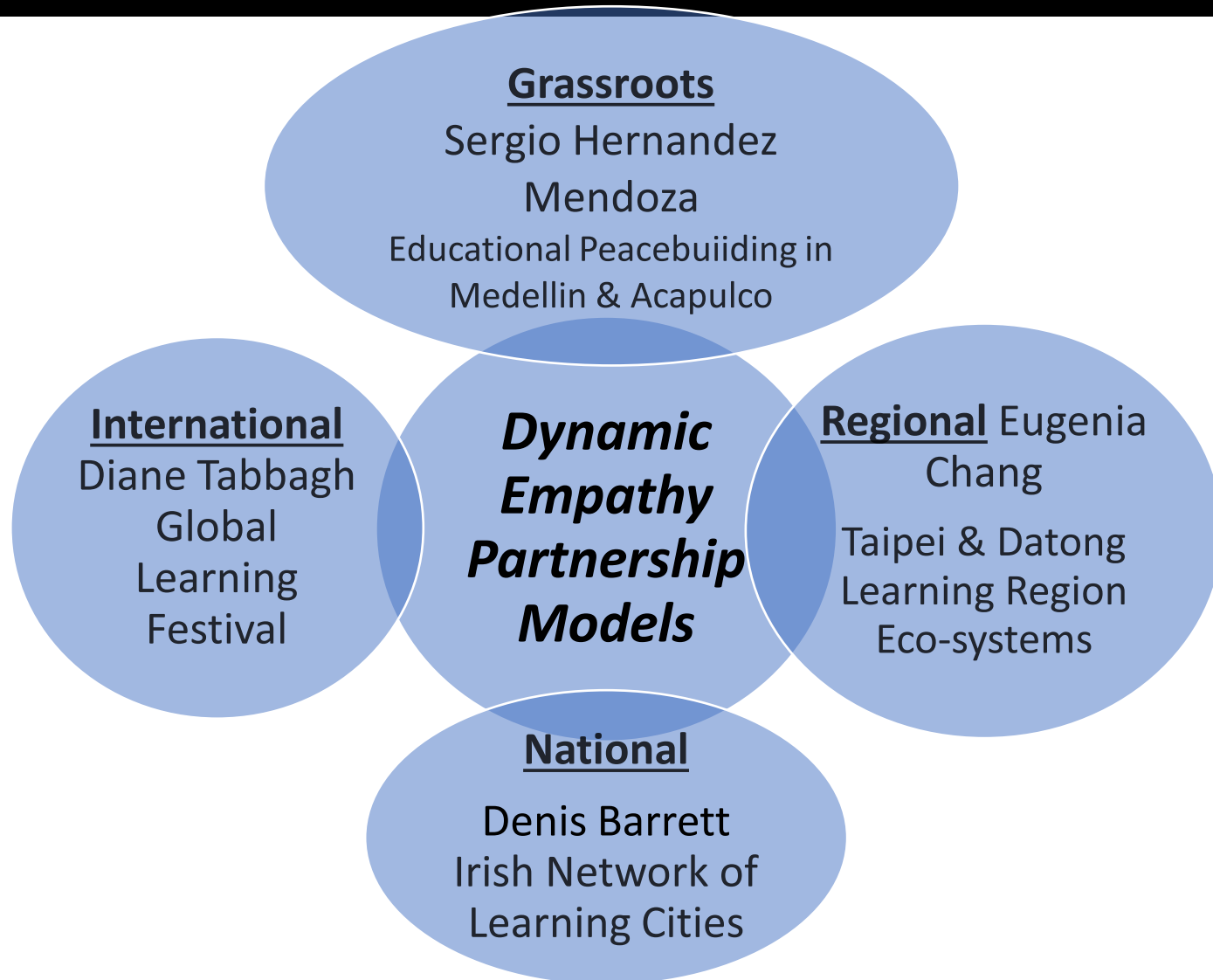
- Reimagining Inclusive Economic Futures**
- Learning Cities: Meeting Today's Challenges for a Better Future**
- Implementing an EcCoWell Approach for Holistic Development**
- Connecting Urban and Rural Learning City Initiatives**
- Harnessing Museums, Heritage and Education**
- Addressing Disadvantage to Build Inclusive Learning Cities**
- Faith-Based Learning City Development**

Context: What is EcCoWell?

- ▶ Developed in 2012, and stands for Economy/ Ecology, Community/ Culture/ Cohesion, Wellness/ Wellbeing and Lifelong Learning.
- ▶ Focuses on learning neighborhoods and the integration of health, environment and learning
- ▶ Created to proactively respond to change and challenges such as COVID19.

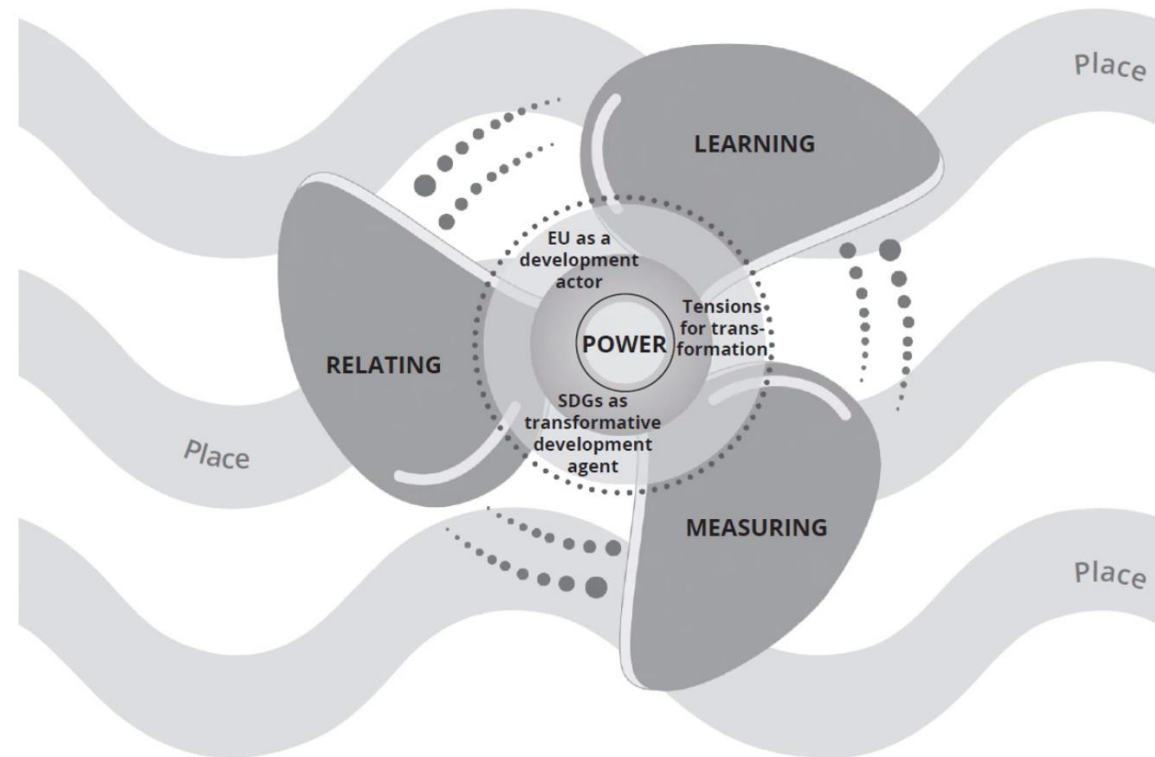


Interviews & Panel Discussion



Power of Empathy Partnerships for Transformation

The Propeller Model



England, R., Guevara, J.R., & Johnson, M. (2021, March 10). *The Propeller Model: Transformations: Place, Power and the SDGs*. [Graduate Student and ECR Workshop] RMIT University, European Union Centre of Excellence.

Thank you!

